

Monday 11 May 2020



To translate to your preferred language click [here](#) 

Dear Parents and Carers of Broadbeach State School students,

The efficiency of the collection of students from school this afternoon was unsatisfactory.

1. I apologise to the confusion regarding the collection points caused by conflicting messages from staff.
2. I thank you all for your continued patience as we refine processes so we observe the social distancing restrictions.
3. I thank those who followed the instructions outlined in Thursday's letter regarding the delivery and collection of students.

To ensure clarity of the collection of students, please peruse the text below from my letter sent on Thursday last week and refer to the map outlining the collection points. Spend the time required to **clearly explain to your child/ren** where you will meet them or where they will leave the school grounds.

I know that together we can make the collection run smoothly and without angst.

Regards

**Bruce Langes**  
Principal

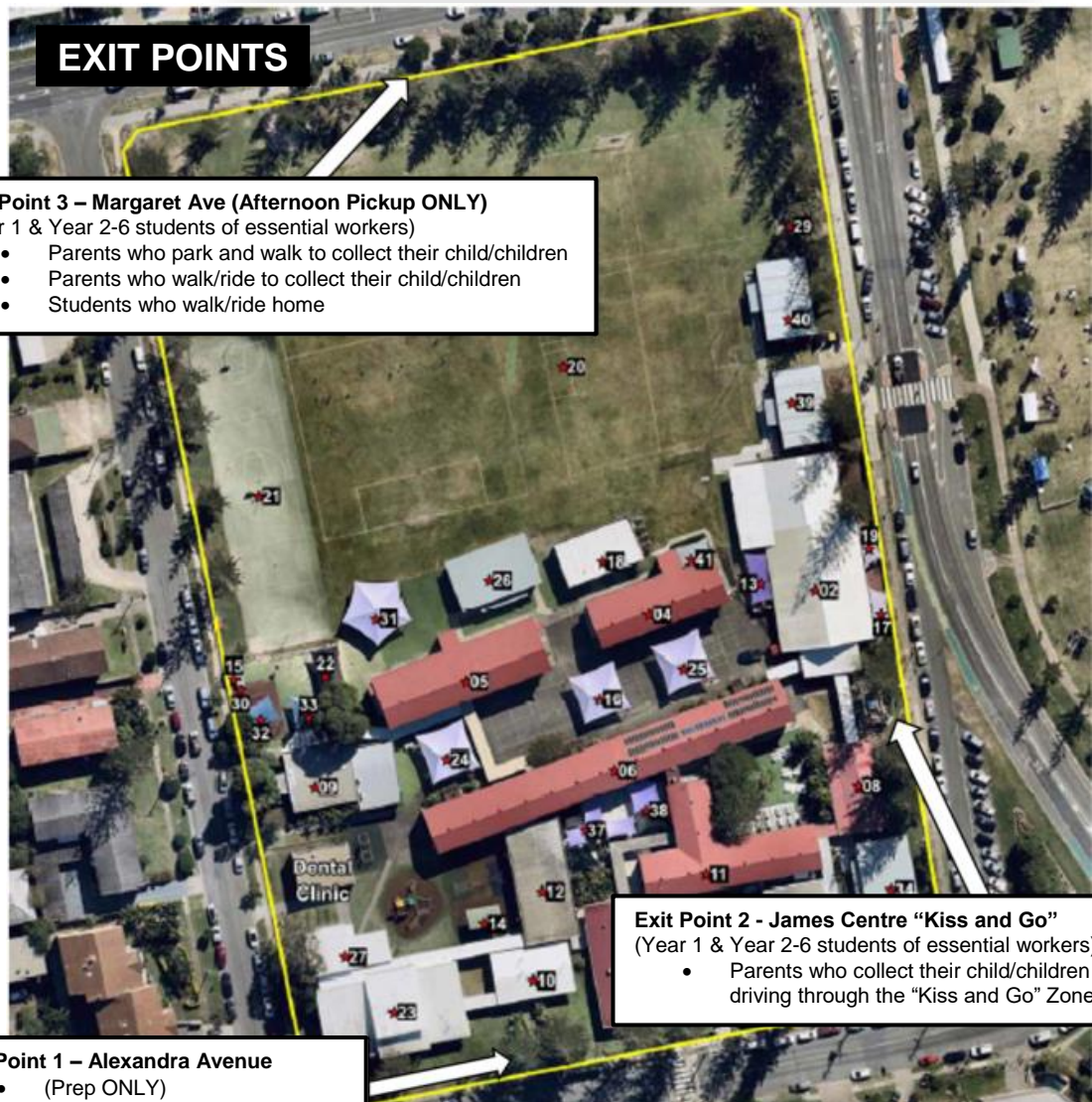
Parent access to the school grounds will be heavily restricted with:

**Two entry points (before school):**

1. Alexandra Avenue gate - for Prep
2. James Centre gate - for Year One and children of essential workers

**Three exit points (after school):**

1. Alexandra Avenue gate - for Prep
2. James Centre gate - for Year One and children of essential workers **being collected from the "Kiss and Go" Zone**
3. From the oval inside the Margaret Street Gate for Year One and children of essential workers **being collected by parents in person**



**EXIT POINTS**

**Exit Point 3 – Margaret Ave (Afternoon Pickup ONLY)**  
(Year 1 & Year 2-6 students of essential workers)

- Parents who park and walk to collect their child/children
- Parents who walk/ride to collect their child/children
- Students who walk/ride home

**Exit Point 2 - James Centre "Kiss and Go"**  
(Year 1 & Year 2-6 students of essential workers)

- Parents who collect their child/children whilst driving through the "Kiss and Go" Zone

**Exit Point 1 – Alexandra Avenue**  
• (Prep ONLY)